

/igh/ Sound Family Sheet



Level 6

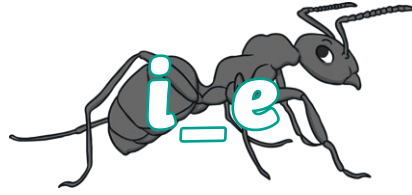
We know there are lots of different graphemes that can be used to represent the /igh/ sound.

These graphemes are likely to be used when the /igh/ sound is...



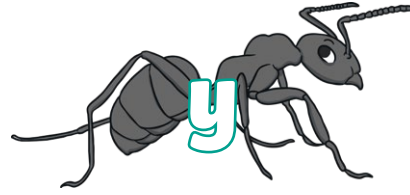
- at the end of a word;
- in the middle of the word and is followed by 't'.

high
bright



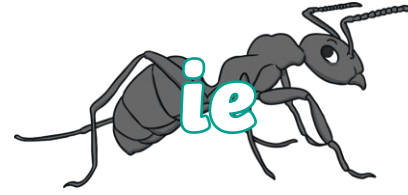
- in the middle of the word. (This is the most common form.)

wide
slide



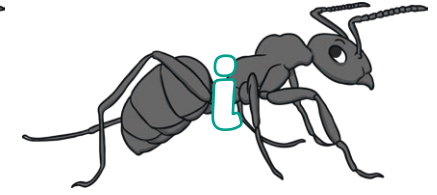
- at the end in short words;
- in the middle of some less common words.

my
try
python



- in tie, pie, lie and die;
- all other uses are in suffixes when the sound is at the end e.g. cried.

pie cried
lie fried



- at the start of the word;
- in words of two syllables or more.

iris
item
silent